

Forged Steel Leaves



JC2112
2-1/2" x 4-1/8"



JC2113
2-1/2" x 2-3/4"



JC2115
4-1/2" x 1-5/8"



JC2177
R 2-5/8" x 10 Ga.



JC2178
R 2" x 10 Ga.



JC2179
R 2" x 10 Ga.



JC2180
R 3-1/2" x 10 Ga.



JC2181S
R 4"



JC2181
R 2-3/4" 11 Ga.



JC2182
R 4" 11 Ga.



JC2186
R 3-9/16"



JC2192
2-1/2" x 1-1/4"



JC2193
4" x 1-1/4"



JC2194
2-3/4" x 1-3/8"



JC3116
3-5/8" x 1-1/2"



JC3117
8-1/4" x 3-1/8"



JC2163A
R 3" x 2"



JC2164
R 3" x 2"



JC2187
R 3-5/8" x 11 Ga.



JC3126
R 3-1/2"



JC3187
R 3-1/4"



JC4120
R 4"



JC4129
4-1/2" x 5-3/8"



JC2140
6-3/4" x 1"



JC2141D
2" x 11"



JC2141A
1-3/4" x 11-1/2"



JC4131B
8-5/8" x 2"



JC4131A
11-1/2" x 2-5/8"



JC3198
5" x 2-3/4"



JC4121
3-3/8" x 2-3/4"



JC4166
4" x 8"



JC4180
3" x 2-3/8"

Forged Steel Leaves



JC4140L/R
9" x 5-1/8"



JC4144L/R
11-1/2" x 4-3/4"



JC4179
2-1/4" x 6-1/4"



JC4182
4-3/8" x 3-1/2"



JC4188
2-3/4" x 6-3/8"



JC4295
4-1/2" x 11"



JC4271
3" x 2-3/8"



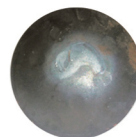
JC4312
5-1/2" x 4-1/2"



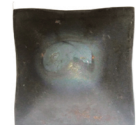
JC3122
R 1-1/8"



JCN1
Rd. 1-1/4"



JCN2
Rd. 1-5/4"



JCN3
Sq. 1-1/2" x 1-1/2"



JC2178N
R 5/16" Head: 1/2"



Tie Knot



Fill In Design